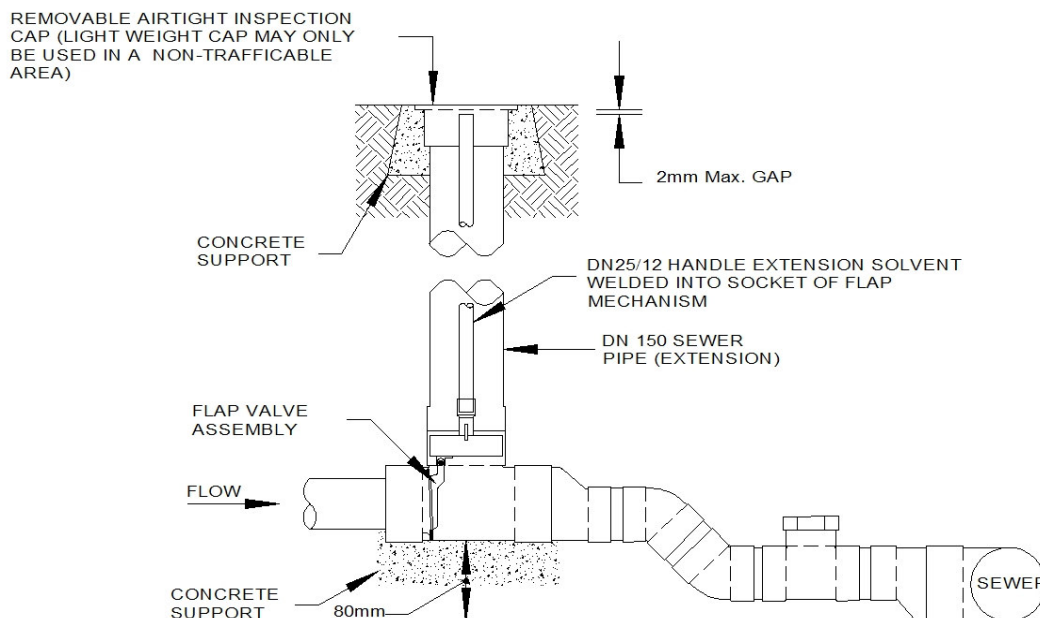


# Technical information for plumbers

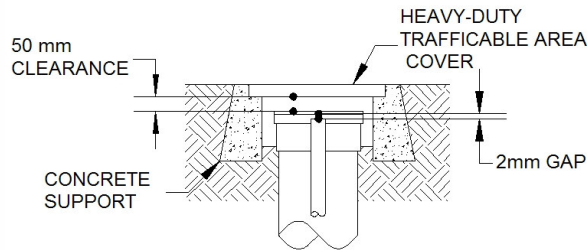
Bulletin - December 2008

## Installation of reflux valve chambers.

Within Sydney Water's area of operation all reflux valves shall be installed within a chamber complying with AS/NZS 3500.2 clause 4.8 except where it is installed in an accessible position within a building (see AS/NZS 3500.2 clause 9.13.2), or can be fully serviced and maintained from finished ground or floor level.



PVC reflux valve accessible from finished ground or floor level installed with a non-trafficable inspection cap



PVC reflux valve access cover installed in a trafficable area

Further information on the installation requirements for reflux valves may be found in the NSW Code of Practice Plumbing and Drainage and Australian Standard AS/NZS 3500 Part 2 (Sanitary plumbing and drainage).

A free copy of the NSW Code of Practice Plumbing and Drainage (2006) and associated circulars are available at <http://www.dwe.nsw.gov.au/water/plumbing.shtml>

More information is available on our website at [www.sydneywater.com.au](http://www.sydneywater.com.au) under 'Plumbing'. You can also contact us through the Ask Sydney Water section of our website at [www.sydneywater.com.au/AskSydneyWater/](http://www.sydneywater.com.au/AskSydneyWater/)